



Xiaomi Milanese Quick Release Strap User Manual

Read this manual carefully before use, and retain it for future reference.

Assembling/Disassembling the Strap

Assembling the strap:

Align the strap with the body of the band and fasten together. Pull on the strap before wearing to ensure it is fastened securely.

Disassembling the strap:

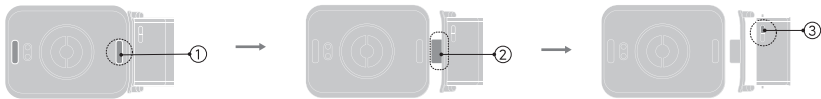
Press the quick-release buttons on both sides of the band and pull away the strap to separate it from the body of the band.

Replace the strap individually:

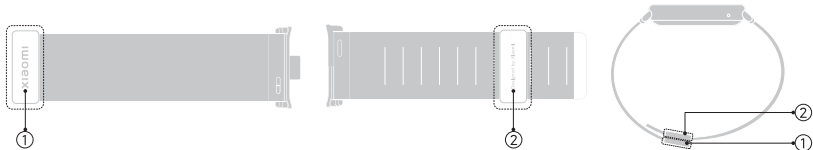
1. Pull the spring bar of the strap, tilt the strap outwards to separate it from the quick-release connector.
2. Pull the spring bar of the strap and align the spring bar hole at both ends of the quick-release connector to complete the installation of the new strap.



- ① Quick-release buttons
- ② Quick-release connector
- ③ The spring bar



- ① Strap buckle upper cover
- ② Strap buckle lower cover



To adjust the strap length:

Move the lower cover of the strap buckle, adjust the strap to fit your wrist size, and fasten the magnetic strap buckle to complete wearing.

Pull on the strap before wearing to ensure it is fastened securely. If the strap is not adjusted to the proper length, the band body may not come into proper contact with your skin, which will affect the accuracy of the monitoring data.

Care & Maintenance

1. During daily use, avoid wearing the band too tightly. Please keep the contact areas of the band and strap clean and dry. Wipe away any sweat from the strap after exercise.
2. Please stop using the product immediately and seek medical assistance if the contact area on your skin begins to show signs of redness or swelling.
3. Do not put the strap near a heat source or expose it to direct sunlight, because overheating will cause it to deform or even melt.
4. If the strap is stained or dirty, please wipe it gently with a soft damp cloth, and then let it dry naturally in a ventilated and cool place.
5. Avoid rubbing the strap against rough or sharp objects and keep the strap away from flammable, acid or alkaline substances.

Model: M2306AS1

Warranty Notice

As a Xiaomi consumer, you benefit under certain conditions from additional warranties. Xiaomi offers specific consumer warranty benefits which are in addition to, and not instead of, any legal warranties

provided by your national consumer law. The duration and conditions related to the legal warranties are provided by respective local laws. For more information about the consumer warranty benefits, please refer to Xiaomi's official website <https://www.mi.com/en/service/warranty/>. Except as prohibited by laws or otherwise promised by Xiaomi, the after-sales services shall be limited to the country or region of the original purchase. Under the consumer warranty, to the fullest extent permitted by law, Xiaomi will, at its discretion, repair, replace or refund your product. Normal wear and tear, force majeure, abuse or damage caused by the user's negligence or fault are not warranted. The contact person for the after-sale service may be any person in Xiaomi's authorized service network, Xiaomi's authorized distributors or the final vendor who sold the products to you. If in doubt please contact the relevant person as Xiaomi may identify. The present warranties do not Apply in Hong Kong and Taiwan.

Products which were not duly imported and/or were not duly manufactured by Xiaomi and/or were not duly acquired from Xiaomi or a Xiaomi's official seller are not covered by the present warranties. As per Applicable law you may benefit from warranties from the non-official retailer who sold the product. Therefore, Xiaomi invites you to contact the retailer from whom you purchased the product.

Manufactured by: Xiaomi Communications Co., Ltd.

Address: #019, 9th Floor, Building 6, 33 Xi'erqi Middle Road, Haidian District, Beijing, China, 100085

For further information, please go to www.mi.com

Importer:

Beryko s.r.o.

Pod Vinicemi 931/2, 301 00 Plzeň

www.berko.cz